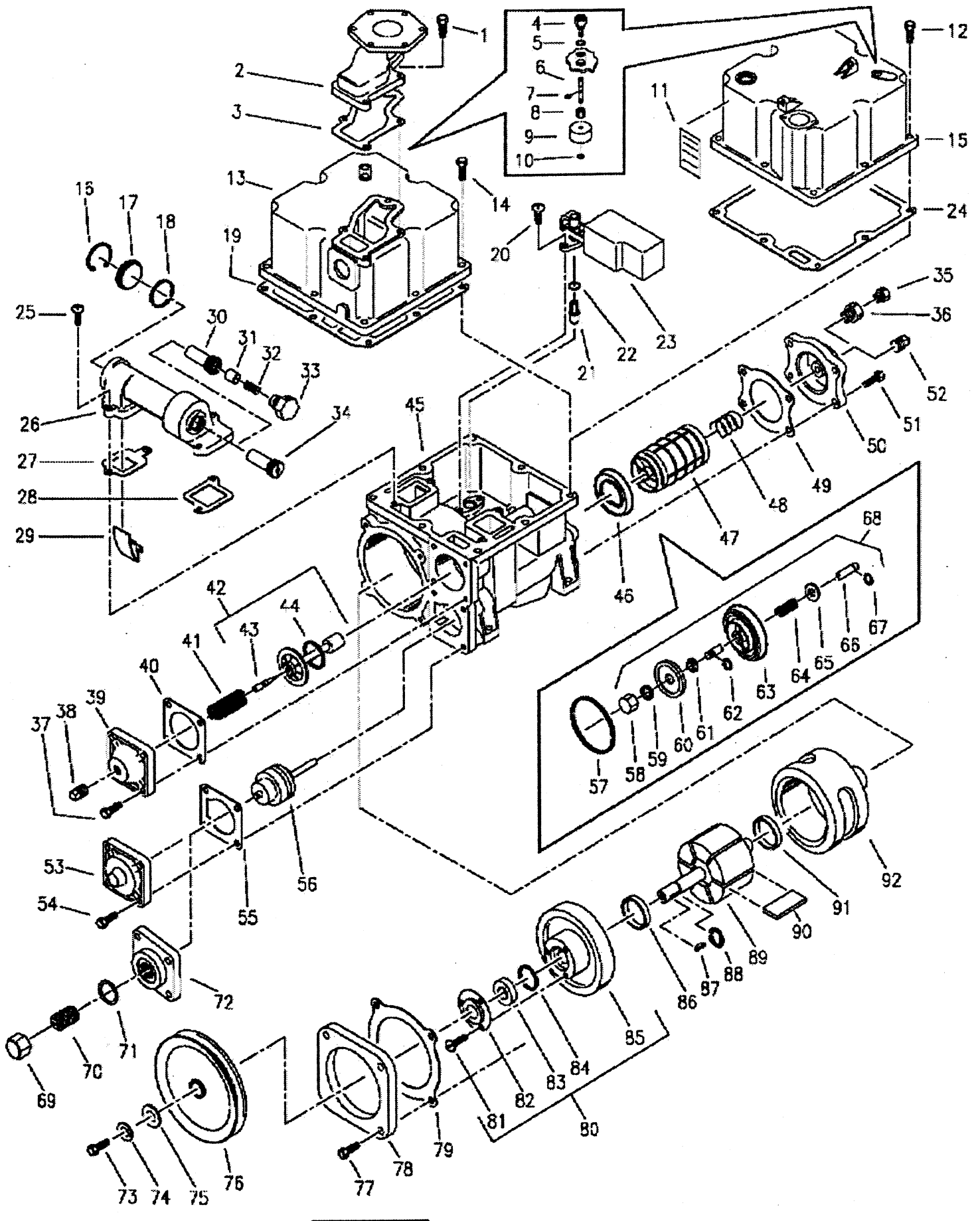


Type 75 Pumping Unit Parts List -



Type 75 Pumping Unit Parts List -

Item	P/N	Description	Comment
1	A479902	Bolt	M8-1.25 X 25 mm
2	N152901	Meter Inlet Adaptor	Without Tap
	105586	Meter Inlet Adaptor	High Alcohol
3	N162801	Gasket, Meter Inlet Adaptor	} Furnished as an Assembly
4	108731	Housing, air valve float assy	
5	108737	Gasket	
6	108732	Shaft	
7	108735	Snap Ring	
8	108733	Nut	
9	108734	Float	
10	108736	Retainer ring	
11	xxxxxx	xxxxxxx	xxxxxxx
12	A479902	Bolt	M8-1.25 X 25 mm
13	N152801	Cover, Atmospheric Chamber	Meter Mount Style
	105787	Cover, Atmospheric Chamber	Meter Mount Style—High Alcohol
14	A479902	Bolt	M8-1.25 X 25 mm
15	N347901	Cover, Atmospheric Chamber	Pipe Outlet with Motor Mount Ears
	103055	Cover, Atmospheric Chamber	Pipe Outlet with Motor Mount Ears - High Alcohol
	xxxxxx	xxxxxx	xxxxxxx
	xxxxxx	xxxxxx	xxxxxxx
16	A471001	Retainer Ring	
17	103089	End Plug	
18	A294213	O-ring	
	103094	O-ring	High Alcohol
19	N162901	Gasket - Atmospheric Cover	
20	A480101	Bolt - Round Head	M6 - 0.7 x 20 mm
21	N888301	Non - reversing float	
22		O-ring	
		O-ring	
23	109892	Atmospheric Float Assembly	
24	A479902	Gasket - Atmospheric Cover	
25	A480101	Bolt - Round Head	M6 - 0.7 x 20 mm
26	N153801	Air Separator Body	
	103051	Air Separator Body	High Alcohol
27	N162501	Gasket, Inlet Separator	
28	N162601	Gasket, Outlet Separator	
29	N190201	Insert - air separator inlet	
30	108727	Tube - Air Separator	} OIML Only
31	108730	Piston	
32	108725	Spring	
33	108728	End Cap	
34	N225301	Tube—Air Separator	
35	109668	Screw - Air Test Valve	
36	109666	Adaptor - Air Test Valve	
37	A479902	Bolt	M8-1.25 X 25 mm
38	A019902	Pipe Plug	1/4 - 18NPT
39	N154801	Cover, Control Valve	
	103053	Cover, Control Valve	High Alcohol
40	N162601	Gasket	
41	E008001	Spring	Standard Delivery Pump 12 GPM
	J325201	Spring	Heavy Duty Delivery Pump 22 GPM
42	N107301	Control Valve Assembly	
	108419	Control Valve Assembly	High Alcohol
43		Pressure Relief Valve	
44		O-ring	
		O-ring	High Alcohol
45	N150602	Pump Body	
	103052	Pump Body	High Alcohol
	xxxxxx	xxxxxx	xxxxxx
	xxxxxx	xxxxxx	xxxxxx
46	N160301	Filter Insert	

Type 75 Pumping Unit Parts List -

Item	P/N	Description	Comment
47	100070 A311901 N347301	Strainer Filter Strainer Cloth Sack	Standard Production Paper Filter 35 Micron Special - Used with Sack 10 Micron
48	N905001	Filter Spring	
49	N162201	Gasket	
50	N154701 103054	Filter Cover Filter Cover	High Alcohol
51	A479902	Bolt	
52	A019902	Pipe Plug	
53	N154901 105585	Bypass Cover Bypass Cover	Non- Adjustable High Alcohol
54	A479902	Bolt	
55	N162401	Gasket	
56	N481201 N481202 N481203	Bypass Valve Bypass Valve Bypass Valve	Standard - Silver Spring Standard - Green Spring Standard - Copper Spring
57	A294212 A294212	O-ring O-ring	High Alcohol
58	A620801	Cap Nut	
59	A620901	Seal Ring	
60	N873001	Disc	
61	N872801	Adaptor	
62	A620101	Retaining Ring	} Not Sold Separately
63	N872901	Check Valve Body	
64	N873201	Spring	
65	N873101	Washer	
66	N872701	Shaft	
67	A620101	Retaining Ring	
68	N873301	Check Valve Assembly	
69	N308301	Cap	
70	N308201	Adjustment Screw	
71	A507901	Washer	
72	N308101	Cover - Adjustable Bypass	
73	A479903	Screw	M8 - 1.25 x 20mm
74	A-3-01	Lock Washer	
75	A028101	Flat Washer	
76	N106901 100040	Pulley - Single Groove Pulley - Dual Groove	
77	A479902	Bolt	M8 - 1.25 x 25mm
78	N155901	Clamping Ring	
79	N162701	Gasket	
80	J682702	Rotor Cover Assembly	
81	A480001	Flat Head Screw	
82	H352101	Shaft Seal Retainer	
83	A323702	Shaft Seal (with insertion tool)	
84	A247014	Square Seal	
85	N103801	Rotor Cover	
86	N650401 N238101	Throw Out Ring Throw Out Ring	Standard Delivery Pump Heavy Duty Pump
87	A1999501	Woodruff Key	
88	A263101	Retaining Ring	
89	N238301 xxxxxx	Rotor & Shaft Assembly xxxxxx	Standard 6 Blade Rotor xxxxxxx
90	N238201	Rotor Blade	
91	N650401 N238101	Throw Out Ring Throw Out Ring	Standard Delivery Pump Heavy Duty Pump
92	N156401 N159501	Stator Stator	Standard Delivery Pump Heavy Duty Pump