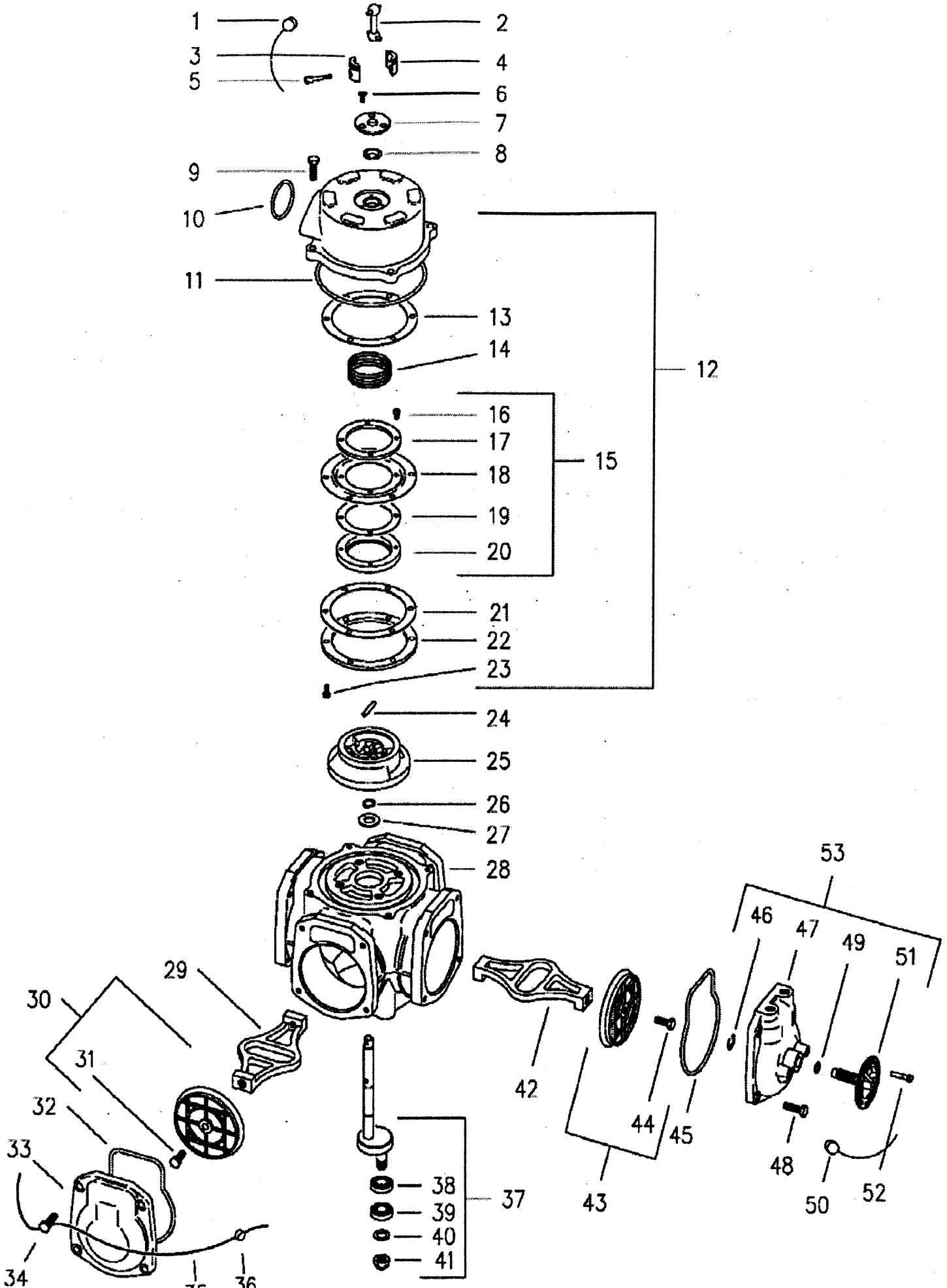


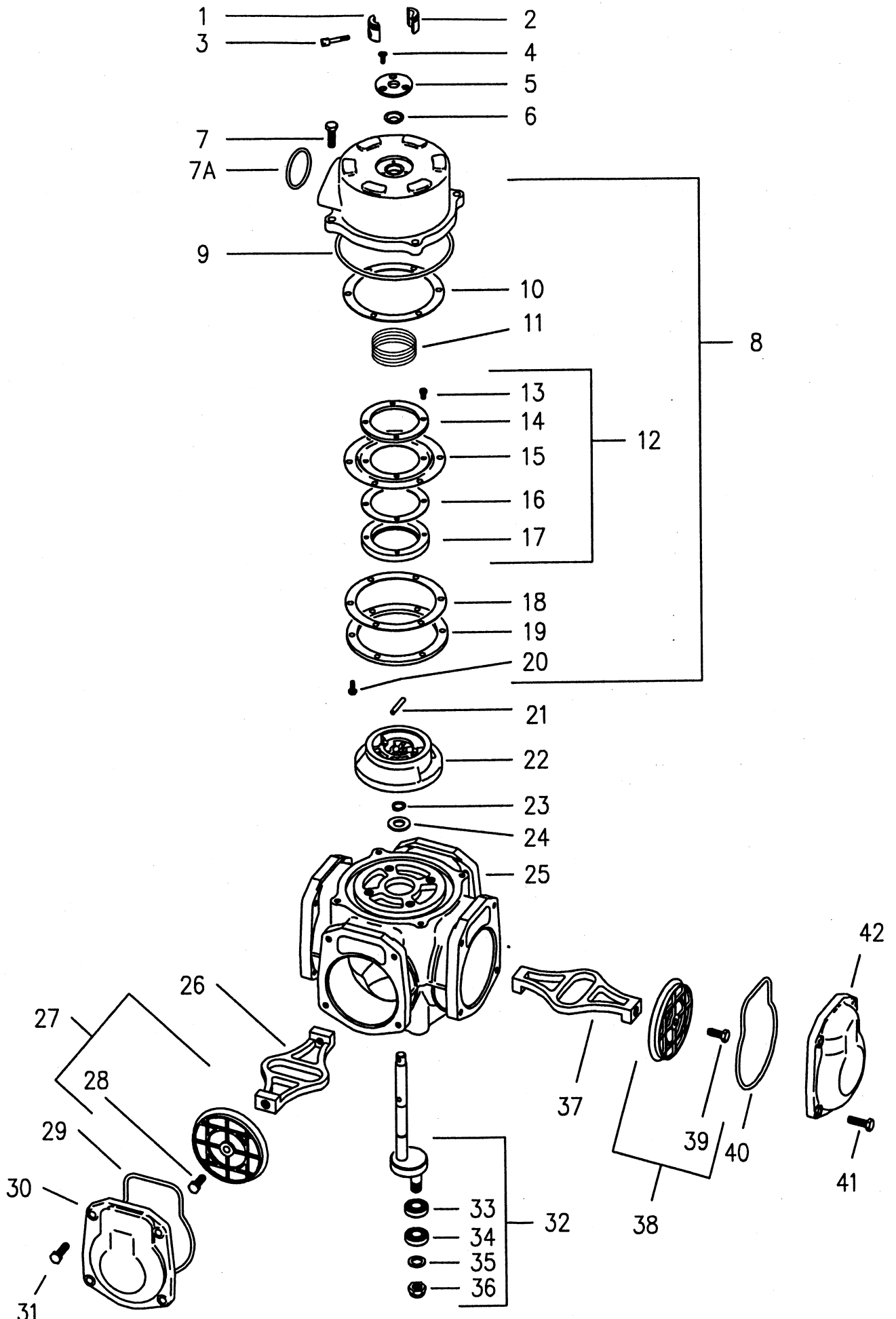
Sb-100 Parts List - Mechanical Calibration



Sb-100 Parts List - Mechanical Calibration

Item	P/N	Description	Comment
1	N/A	Lead Seal Wire	Not Part of Assembly
2	N/A	Universal Link	Not Part of Assembly
3	H651203	Half Coupling	Unthreaded
4	H650402	Half Coupling	Threaded
5	H650501	Screw	
6	A480001	Screw, Flat HD.	M 3.5 - 0.6 x8mm
7	N666401	Shaft Seal retainer	
8	107694	Shaft Seal	
9	A586901	Screw, Hex HD.	M6 - 1.0 x 20 mm
10	A247018	O-ring, square section	
10A	N646505	Collector cover	
	103044	Collector cover	High Alcohol
11	A247019	O-ring, square section	
12	101184	Collector Cover Assembly	
	103048	Collector Cover Assembly	High Alcohol
13	N673201	Gasket	
14	103077	Spring	
15	101183	Counter Valve Assembly	
16	A631901	Screw, Fil HD.	M4 - 0.7 x 10mm Stainless Steel
17	N685901	Inner Diaphragm retainer	
18	100081	Diaphragm	
19	N673101	Gasket	
20	N902501	Counter Valve	
21	N673201	Gasket	
22	N685801	Outer Diaphragm Retainer	
23	A586801	Screw, Pan HD.	M5 - 0.8 x 12 mm
24	N672601	Drive Pin	
25	N891601	Distributor	
26	A579901	Retaining Ring	
27	A584001	Washer	Crankshaft Support
28	101185	Meter Body Assembly	
	103049	Meter Body Assembly	High Alcohol
29	N654802	Connecting Rod	Lower Rod
30	N701502	Piston Assembly	
	103046	Piston Assembly	High Alcohol
31	N792201	Piston Screw, Hex HD.	With Nylon Patch
32	A247010	O-ring, square section	
33	N659201	Cylinder cover	
	103041	Cylinder cover	High Alcohol
34	N840401	Screw, Hex HD.	M6—1.0 x 20mm with seal hole
35	N/A	N/A	Customer supplied
36	N/A	N/A	Customer supplied
37	N903801	Crankshaft Assembly	Gallons
	N903802	Crankshaft Assembly	Liters
38	N903701	Roller & Bearing Assembly	
39	N903701	Roller & Bearing Assembly	
40	A631801	Washer	
41	A239401	Lock Nut	
42	N654801	Connecting Rod	Upper Rod
43	N701502	Piston Assembly	
44	N792201	Piston Screw, Hex HD.	High Alcohol
45	A247010	O-ring, square section	
46	A586401	Retaining ring	
47	N683701	Calibrating Cover	
	103043	Calibrating Cover	High Alcohol
48	A586901	Screw, Hex HD.	
49	A212247	O-ring	
	103092	O-ring	High Alcohol
50	N/A	Wire and Seal	Customer Supplied
51	N701601	Calibrating Dial & Screw Assembly	
52	N675801	Seal Pin	
53	N779601	Calibration Cover Assembly	
	103047	Calibration Cover Assembly	High Alcohol

Sb-100 Parts List - Electronic Calibration



Sb-100 Parts List - Electronic Calibration

Item	P/N	Description	Comment
	N/A	Lead Seal Wire	Not part of assembly
	N/A	Universal Link	Not part of assembly
1	H651203	Half Coupling	Un-threaded
2	H650402	Half Coupling	Threaded
3	H650501	Screw	
4	A480001	Screw, Flat HD	M3.5-0.6 x 8mm
5	N666401	Shaft Seal Retainer	
6	107694	Shaft Seal	
7	A586901	Screw, Hex HD.	M6 - 1.0 x 20 mm
7A	A247018	O-ring, square	
7B	N646502	Collector Cover	
	103044	Collector Cover	High Alcohol
8	101184	Collector Cover Assembly	
	101184	Collector Cover Assembly	High Alcohol
10	N673201	Gasket	
11	103077	Spring	
12	101183	Counter Valve Assembly	
13	H63101	Screw, Fil. HD	M4-0.7 x 10mm
14	N685901	Inner Diaphragm Retainer	
15	100081	Diaphragm	
16	N673101	Gasket	
17	N902501	Countervalue	
18	N673201	Gasket	
19	N685801	Outer Diaphragm Retainer	
20	A586801	Screw, Pan Hd.	M5 - 0.8 x 12mm
21	N672601	Drive Pin	
22	N891601	Distributor	
23	A579901	Retaining Ring	
24	A584001	Washer	Crankshaft Support
25	101185	Meter Body Assembly	High Alcohol
	103049	Meter Body Assembly	Lower Rod
26	N654802	Connecting Rod	
27	N701502	Piston Assembly	
28	103046	Piston Assembly	High Alcohol
29	N792201	O-ring, square section	
30	N659201	Cylinder cover	
	103041	Cylinder cover	High Alcohol
31	A586901	Screw, Hex HD	M6.0 x 1.0 x 20 mm
32	N903801	Crankshaft Assembly	Gallons
	N903802	Crankshaft Assembly	Liters
33	N903701	Roller Bearing Assembly	
34	N903701	Roller Bearing Assembly	
35	A631801	Washer	
36	A239401	Lock Nut	
37	N654801	Connecting Rod	Upper Rod
38	103046	Piston Assembly	High Alcohol
39	N792201	Piston Screw, Hex HD.	
40	A247010	O-ring, square section	
41	A586901	Screw, Hex HD	
42	N659201	Cylinder Cover	
	103041	Cylinder Cover	High Alcohol